

loomma

SECOND EDITION

LIGHTING COLLECTIONS
2023 / 2024

STEP BEYOND

AULIX lighting

návrhy osvětlení a prodej svítidel
inteligentní systémy, vypínače

SVĚTELNÉ STUDIO

Náměstí Na Sádkách 705
252 41 Dolní Břežany (Praha západ)

Telefon: +420 246 083 152

Mobil.: +420 702 061 783

E-mail: studio@aulix.cz

Web: www.aulix.cz

E-shop: <http://obchod.aulix.cz>

Sledujte nás také na sociálních sítích:



BOMMA transforms interiors with handcrafted sculptural crystal lighting that creates a distinct mood in each space – from eye-catching centerpieces and installations to soft ambient light.

BOMMA is renowned for its outstanding craftsmanship and signature designs.

All products are hand-made, using premium quality glass and bespoke technologies that enhance authentic craftsmanship.



NEXT-LEVEL

As a leading Czech brand, BOMMA continually pushes the boundaries of glassmaking.

Many designs require abilities a step beyond expectations, elevating traditional craft to next-level mastery. The company fosters authentic craftsmanship and creativity by developing in-house technologies and modern facilities.

CRAFT

BOMMA crystal lighting is hand-made, using premium quality crystal glass. These masterpieces remain as treasured heirlooms for generations to come, continually bringing joy, light and beauty into our lives.

BOMMA's glassworks foster traditional craft in a technologically-advanced facility, enabling the production of exceptionally demanding pieces. The perfect fusion between craftsmanship and technology is possible thanks to BOMMA's parent company Bohemia Machine that develops technologies for the glassmaking industry. They invent bespoke tooling and methods allowing the BOMMA team to always explore the new possibilities of glass.

To become a premier glass-blower takes years of practice and experience, with knowledge passed from masters to apprentices. These craftsmen become irreplaceable and are the foundation stone of BOMMA artistry. BOMMA master glassmakers are backed by over 300 team members and state-of-the-art facilities.

Colors are a very important aspect of BOMMA's products. Even though BOMMA melts only crystal clear glass, a bespoke underlay color process enables BOMMA to create gradient colors that are always unique and add character to every single light.

BOMMA prepares its own mixture of glass-sand that melts at 1,450 °C (2,642 °F). Each day, 9 tons of crystal glass are melted. When glass is produced only, the perfect pieces make it to the final customer. The remainder is re-melted and reused for new products, limiting production waste. Glass making is a never ending cycle of transformation between solid and liquid forms.

Next—Level Craft



1 Each glass shell of the *Ama Collection* is produced by using an old glassmaking technique. Over the course of two days, the glass is heated in a furnace and gradually lays down by its own weight into a prepared mold. A contour pattern is then cut into the glass surface by BOMMA's in-house developed CNC machines adding a final touch.

2 The *Buoy Collection* with its weight approaching 20kg is one of BOMMA's largest collection. First a prototype of glass is always blown into the wooden molds. Once the final design is approved, aluminum molds are produced which ensure that glass parts fit perfectly with metal fittings when assembled.

3 The glass shell of *Mussels* is created on BOMMA's high quality press. This precise technique allows BOMMA to produce a very fine details that are not possible by hand-blowing techniques. The collection carries a rippling patterned imprint. When lit, it creates the effect of light reflecting from a water surface.

4 The *Soap* and *Tim Collections* are produced using the technique of hand-blowing without a mold. These seemingly perfect droplets of molten glass are given a unique shape, making each piece an original.

5 Three BOMMA masters work together to make *Phenomena* glass, which weights over 23 kg. Because the production is so physically demanding they are able to produce only six pieces per day.

Next—Level Craft



Václav Mlynář has been BOMMA's Creative Director since 2017. He curates new collections, initiates new collaborations, oversees all creative outcomes and, together with the BOMMA team, sets new directions.

Václav Mlynář says, “I think of our lighting as sculptural pieces that go a step beyond trends, and will continue to be as breathtaking in future as they are today. I always seek out designs that balance on the edge of design and sculpture. The uniqueness of every piece of glass we produce is something I appreciate the most. For me, it brings both character and value to our products. Glass is a magical material which never ceases to amaze me.”

Collections by Václav Mlynář: *Ama, Buoy, Mussels, Lens, Orbital*



SIGNATURE DESIGN

SPACES DESIGNED BY STUDIO SALARIS

“The main inspiration behind interiors we designed specially for Bomma’s lights, was BOMMA’s identity – bold colors and signature modern designs. The product’s shades and materials influenced the color palettes, and their versatility and combination dictated the architectural choices,” says Studio Salaris.





Flare









Soap Mini



De Castelli x Pyrite



NEW LIGHTING COLLECTIONS

BOMMA's new lighting collections create a distinct impression in any interior: a spark of joy, a playful touch or an awe-inspiring moment, often thanks to their epic size.

These lights simply demand attention – day and night. The spirit of courage and innovation is apparent in lighting collections that incorporate unconventional materials, daring colors, and cutting-edge technology.

Explore new BOMMA crystal lighting collections:
Flare, Stellar Dust, Buoy, Ama, Divina, Mussels
and special edition *De Castelli X Pyrite*.

Discover master craftsmanship, signature design and monumental sizes in BOMMA's new lighting collections.



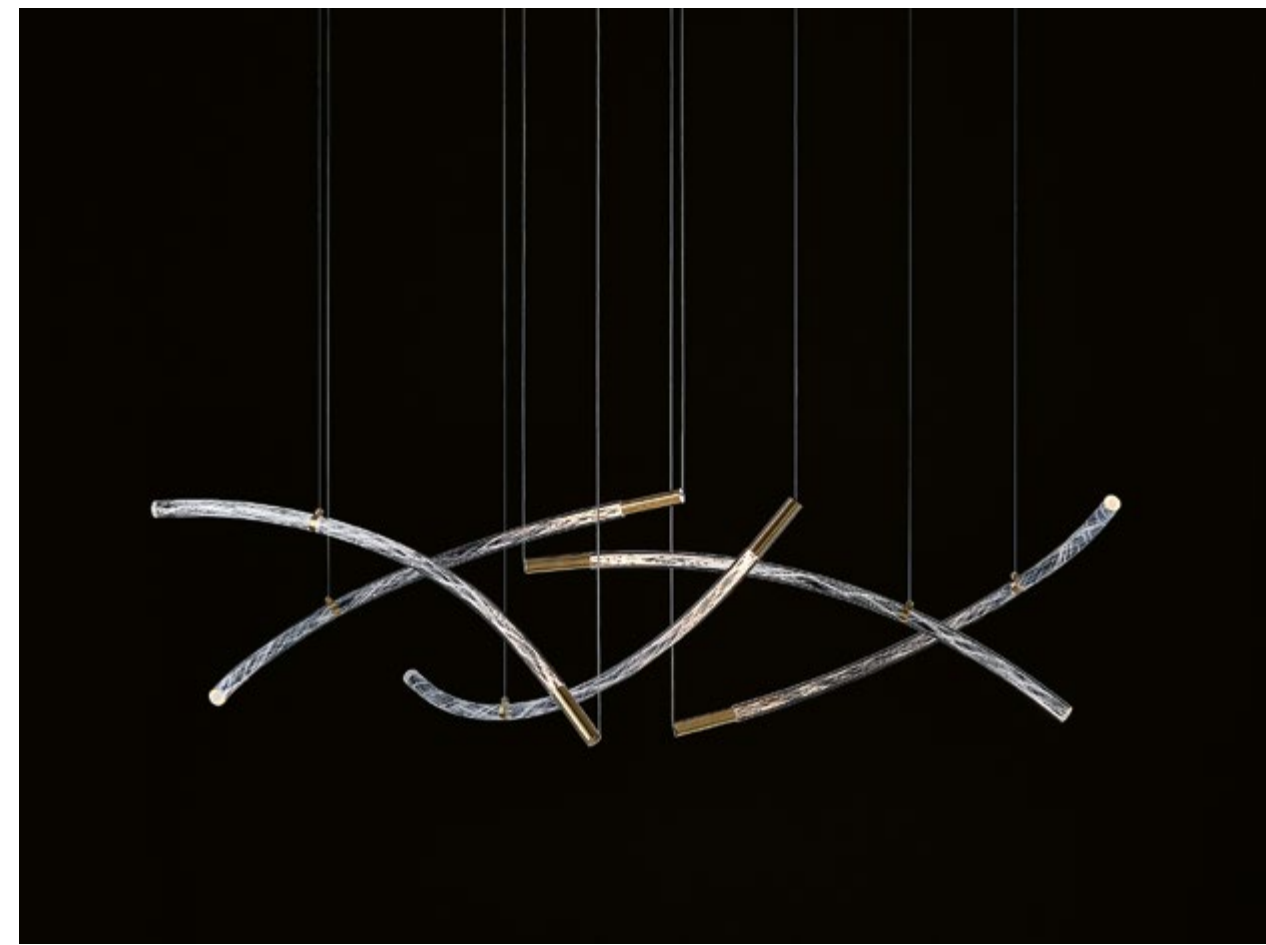
Flare

by Kateřina Handlová

2024

A GLIMPSE OF INNER LIGHT

The beam inside BOMMA's Flare lights its minimalist glass rods from within. This new collection, designed by Kateřina Handlová, pays homage to traditional glassmaking techniques and allows architects and designers to create distinctive lighting installations for diverse spaces. The crystal rods are manually pulled, so each piece is an original with a unique swirl of light spiraling through its interior. The glassmakers pull the piece into a desired length, stretching the glass fragments across the interior of the glass rod. This creates a magical texture inside the rod, seemingly its own Universe, flaring every time a switch is flipped. The collection includes glass rods in three shapes, one perfectly straight and two bent in varying degrees. They can be infinitely combined to create custom installations.





Stellar Dust

By CMC Architects, Václav Mlynář and Jakub Pollág
2024

COSMIC TAPESTRY CARRYING LIGHT THROUGH SPACE

The Stellar Dust lighting is composed of countless speckles that seem to float through space. This collection was originally designed for J&T bank in Prague by CMC architects, and designers Václav Mlynář and Jakub Pollág. Its success resulted in this design being adopted for regular production, as an addition to the BOMMA Constellations. Both optical illusions and the remarkable effects of these crystal components perfectly juxtapose modern interiors. The neutral clear color and universal round shape add to its versatility.

As with all BOMMA Constellations, the magic comes from forming custom clusters of lighting components that are built upon a mathematically precise structure but create a fluid organic effect. It allows both architects and designers to equally uplift small and large spaces with flowing clouds of Stellar Dust.



Glass Color: Clear
Mounting Finish: Anthracite, Brushed Gold



Buoy

by Václav Mlynář

A PRIVATE HARBOR SHINING DAY AND NIGHT

Buoys mark safe zones and harbors with light – a sure guide for completing successful journeys. BOMMA Creative Director Václav Mlynář found inspiration in the symbolism and shape of buoys, designing lights that create a private harbor in your interior. “*The Buoy Collection seeks a balance between sculpture and product design,*” he explains. This exciting new addition combines classic geometric shapes, an unusual light source and monumental hand-blown crystal elements. The design pays homage to early BOMMA collections featuring geometric forms.



Glass Color: Clear, White, Smoke
Mounting Finish: Black, Silver



Divina

by Studio Dechem

THE LIGHT TOUCH OF THE DIVINE, TRANSFORMED INTO DISTINCT COLORS

The *Divina Collection* emulates the timeless concept of a spherical glass body, combined with the delicate touch of color gradients, an idea used in the past by DECHEM studio. *Divina* lights are the younger siblings of the *Phenomena Collection*. Unlike *Phenomena*, the *Divina* lights are smaller and more suitable for intimate interiors. *Divina* is ideal for use above a desk or dining table, its light source located within the bottom of the cylindrical mounting body. Its refined color gradients lend it an aura of timeless dream worlds, while remaining visually striking.



Glass Color: Clear, White, Smoke, Red Orange, Plum
Mounting Finish: Brushed Silver, Brushed Gold



Ama

by Václav Mlynář

PEARLS FROM THE DEPTH OF THE MYSTERIOUS SEA

The name of this collection refers to the Japanese female pearl divers, called Ama. The *Ama Collection* visually evokes the delicate shells of mussels that produce treasured pearls. Ama is formed by a stylized cut-crystal shell, protecting a light source. Each glass shell is produced by using a special glassmaking technique of glass fusing. Over the course of two days, the glass is heated and gradually settles by its own weight into a prepared conical mold. *Ama* lighting comes in both opened and closed versions that work beautifully as individual pieces or natural groupings into mussel clusters.



Glass Color: Clear Matte, Smoke, Bronze Matte
Mounting Finish: Black

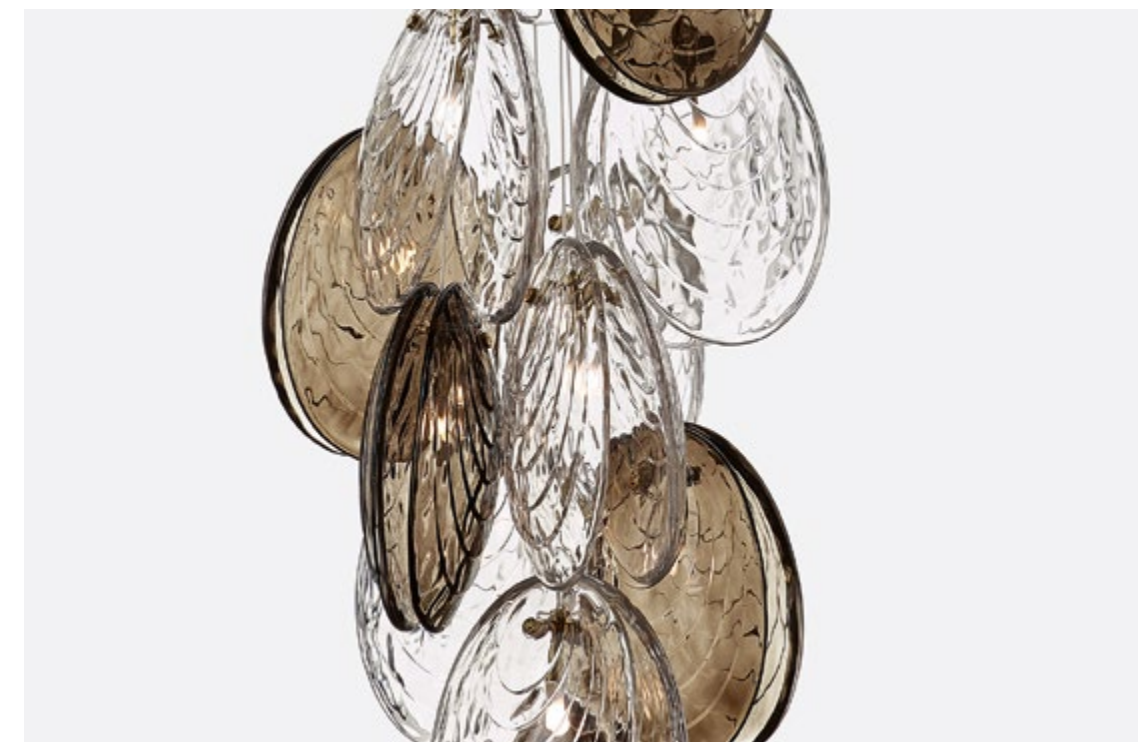
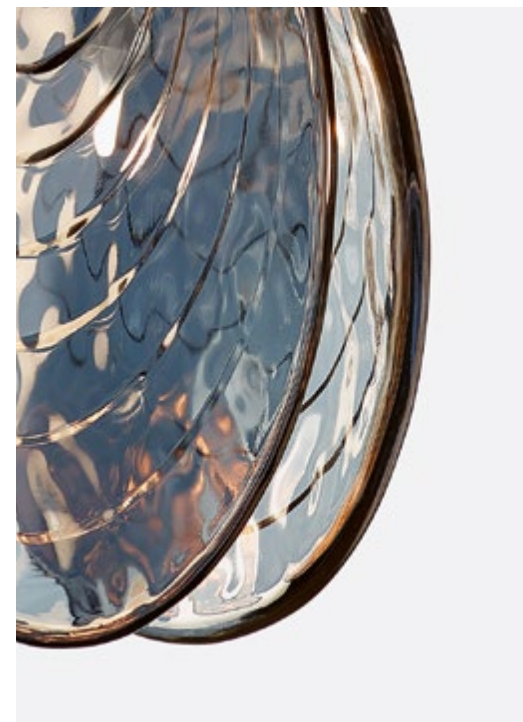


Mussels

by Václav Mlynář

PERFECT SHELLS REFLECTING THE CRYSTAL-CLEAR WATER SURFACE

Elegance, variability and an organic aesthetic define the new *Mussels Collection* designed by Václav Mlynář. Imagine sparkling waters that hide fascinating, incredibly detailed mussels. Two crystal shells surround a light source nested in a precise mounting within either glossy anthracite or brushed gold tones. A rippling, patterned imprint enhances the glass shell. When lit, the effect is that of light reflected from deep water. Apparent at first glance, its inspiration lies in organic shapes, natural colors and the natural environment. The *Mussels Collection* is available in clear, alabaster, dark pearl, smoke and pearl color.



Glass Color: Clear, Alabaster, Dark Pearl, Pearl, Smoke
Mounting Finish: Anthracite, Brushed Gold



De Castelli x Pyrite

by Studio Dechem

SPECIAL EDITION OF THE FIERY STONE

Pyrite – the golden firestone in the shape of a perfect cube, now in *DeOpale* brass finishing by Italian manufacturer De Castelli. Both brands excel in handmade production, while sustaining the highest quality standards. BOMMA and De Castelli jointly introduce Pyrite in this special edition. The surface of this hand-blown crystal cube is encased from three sides in a *DeOpale* brass element. This exquisite brass fitting gains particular chromatic effects, thanks to the manual oxidation of brass. This replicates the reflections of fire opal, characterized by a yellow background that can be particularly vivid and bright, changing in iridescent tones from red to orange. Both small and large Pyrite are available in this delicate *DeOpale* brass finish by De Castelli.



Glass Color: Clear
Mounting Finish: DeOpale Brass

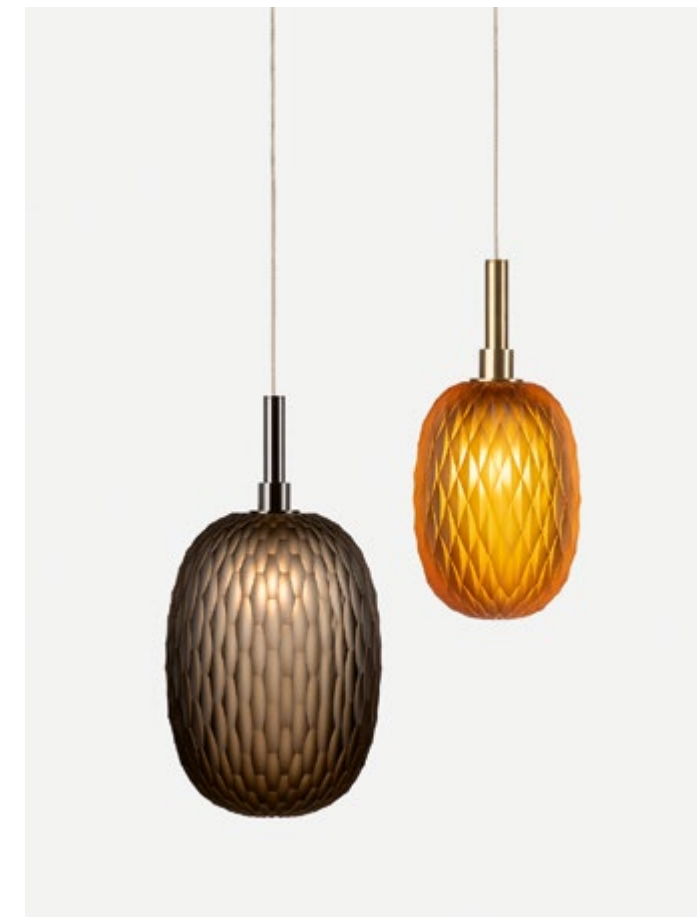


Metamorphosis

by Rony Plesl

THE TRANSFORMATION OF CRYSTAL INTO STUNNING LIGHTED JEWELRY

Metamorphosis is a transformation from one form into another. The *Metamorphosis Collection* transforms crystal into stunning lighted jewels in any interior, creating a variable grouping that enables your own composition. This collection combines the talents of sister glassmaking brands, BOMMA and Rückl - the breathtaking art of hand-cut crystal from Rückl, with BOMMA's exceptional technical solutions and light constellations.



Glass Color: Amber, Clear, Cigar
Mounting Finish: Anthracite, Brushed Gold



Projects

A DISTINCT MOOD IN EACH SPACE

Metamorphosis Collection,
Czechia, Kunsthalle Prague

From smaller compositions to immense constellations.
BOMMA lights enhance offices, intimate home interiors
and large commercial spaces.



Tim Collection, Japan,
Interior by Baqueratta Architectural Design Office
in cooperation with Studio NOI

Mussels Collection,
Installation of 12 pieces, Czechia,
Kunsthalle Praha



Divina Collection

Projects

Buoy Collection



Ama Collection, Minotti Boston, USA





BOMMA Atelier is a hub for meetings of design professionals and aficionados that showcase all BOMMA lighting collections in one location.

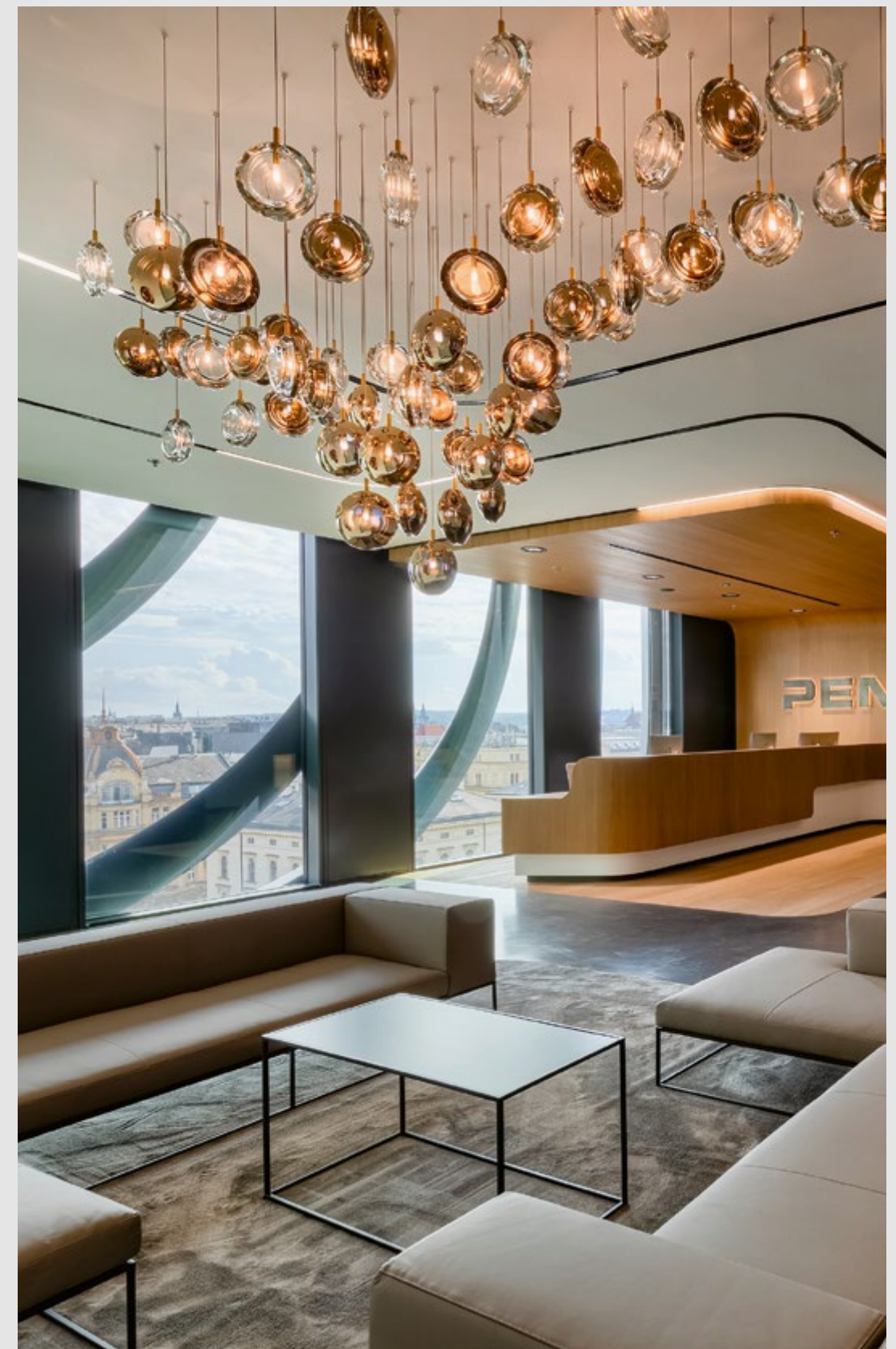
This unique urban apartment in the Cubist Diamond House in Prague combines its original custom-made functionalist furniture with products of leading brands of international contemporary interior design, fostering a dialog about the possibilities of interior design as a field.

Soap mini Collection,
Installation of 142 pieces

Umbra Collection



Projects



Lens Collection, Czechia,
Masaryčka by Zaha Hadid architects & Jakub Cigler architects,
Interior by Penta Real Estate



Mussels Collection, 26 pieces, Belgium
Interior by State of Architecture in cooperation
with PVD Verlichting

Projects

Dark & Bright Star,
installation of 88 pieces,
Interior by AR Visual

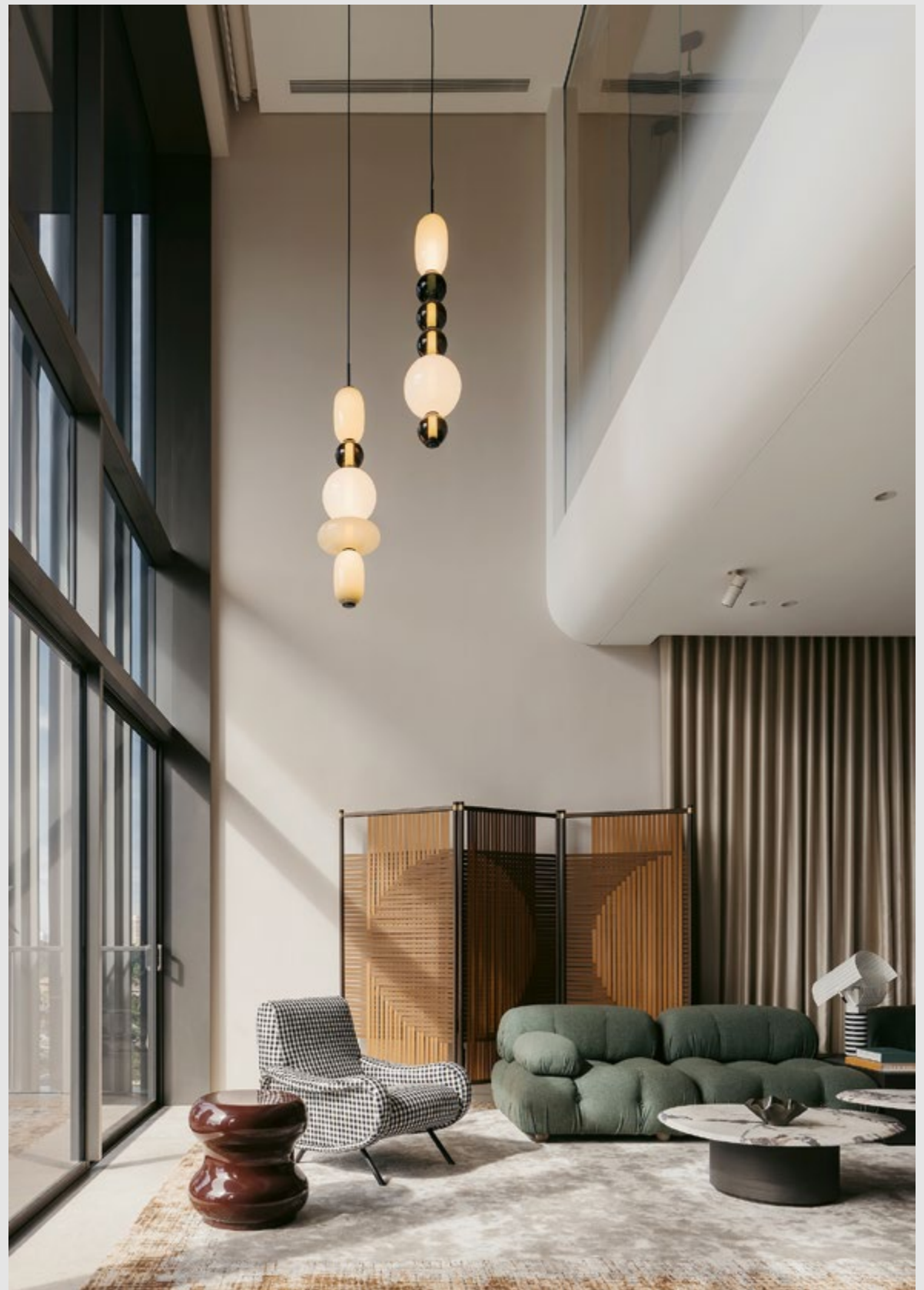


Disc Collection, Czechia, Tee House,
Interior by CMC Architects





Projects



Dew Drops Collection
in customized khaki color

Dew Drops Collection,
wall lamp

Pebbles Collection, Singapore
Interior by Massoneong

Projects



Tim Collection, Czechia
Interior by B² Architecture



Phenomena Collection, Czechia

Shibari Collection, Costa Rica,
Interior by Formafatal





*Stellar Dust Collection, J&T Bank, Czechia,
Interior by CMC Architects*

Projects

*Pyrite Collection,
installation of 98 pieces,
Interior by Monument Office*



*Lantern Collection, Denmark,
Interior in cooperation with our partner
Anker & Co*



*Soap Collection, Channel Islands,
Interior by Bonsai Group*

Projects



*Dark & Bright Star Collection, Poland,
Interior by Soul Interiors*

*Orbital Collection,
Minotti catalog*